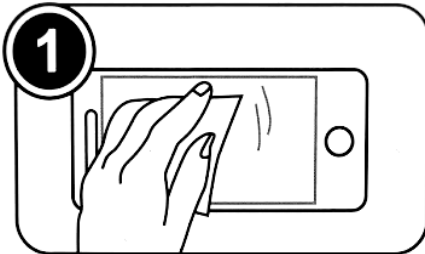


## Armourdog tempered glass installation guide

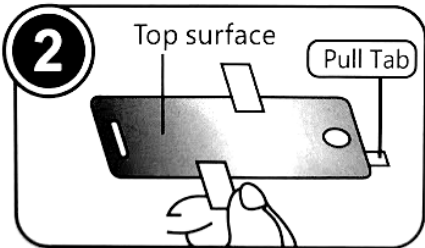
### Preparation

Before starting the procedure, create a clean area to reduce dust before performing the installation. Make sure you have enough room to place all of the components in front of you. Wash and dry your hands to reduce the natural oils on your skin.



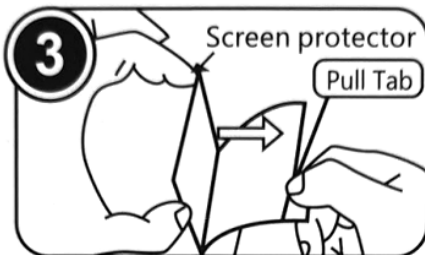
### Clean your tablet

It's really important to clean your tablet screen completely before installation. You need to get every visible speck of dust off the screen as they can cause air bubbles. Wet and dry wipes are in the box to assist with the cleaning. Use the wet wipe first to clean the screen then dry with the second wipe. You can also use the supplied sticker to 'dab' onto dust particles to lift them off the display. TAKE YOUR TIME and do not rush this step.



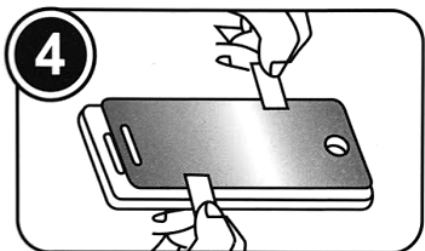
### Line up the glass

Carefully remove the glass from the white protective sleeve. Place your tablet with its freshly cleaned screen directly in front of you. One side of the glass has a protective film which will soon need to be removed. This is the side that adheres to the tablet screen. You can use the supplied stickers on the top surface as an easier way to handle the glass. Line the glass up to the tablet as a test-run. Make sure it fits well and the camera / fingerprint holes are in the correct place.



### Placing the glass

Pull the tab at the edge of the glass slowly and carefully to peel off and remove the clear plastic protective film from the underside of the glass. With the film removed, hold the glass a couple of centimetres above the tablet and make sure again that it's lined up with the tablets home button and camera. Proceed to slowly lay the glass down towards the tablet, tilted first towards the bottom of the tablet screen.



### Let the glass do the work

Once the tempered glass is lined up with the bottom of the tablet and home button and you're happy with the rest of the fit, gently lower it the rest of the way onto the tablet without applying any pressure to the glass. You will see quickly that the glass will do the work and adhere to the screen of the phone. The air bubbles will slowly move to the edge of the screen but you can hurry them along with the dry-wipe cloth. Any stubborn air-bubbles should disappear after a day or two unless they have dust trapped under the bubble.

Please visit the support section of our website to see a tempered glass step-by-step installation video.