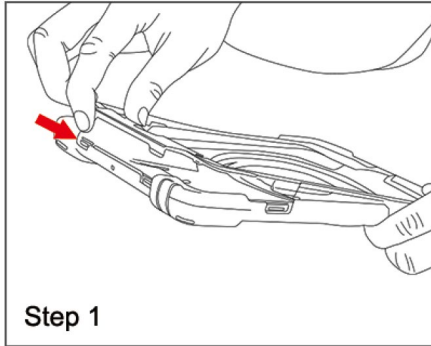
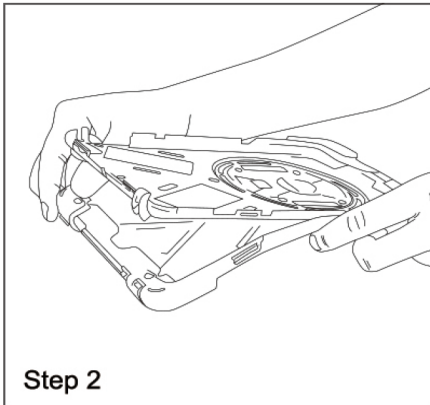


Apple iPad / Samsung rugged shoulder strap case installation guide



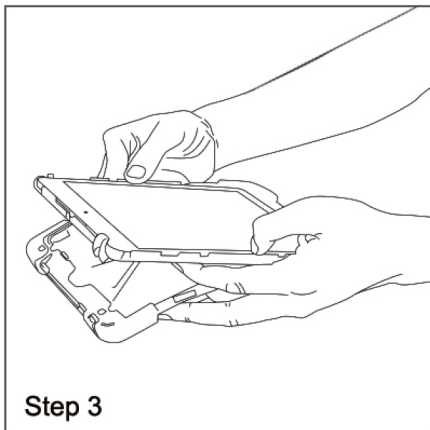
Step 1

Remove the front frame by releasing the clips around the edge.



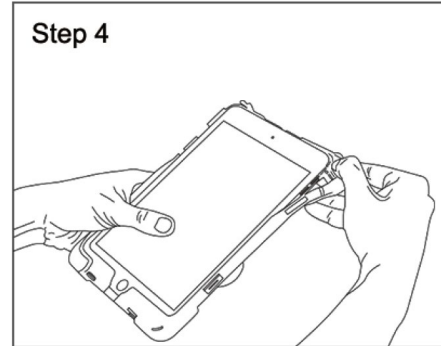
Step 2

Gently peel back the top half of the silicon wrap away from the plastic shell.



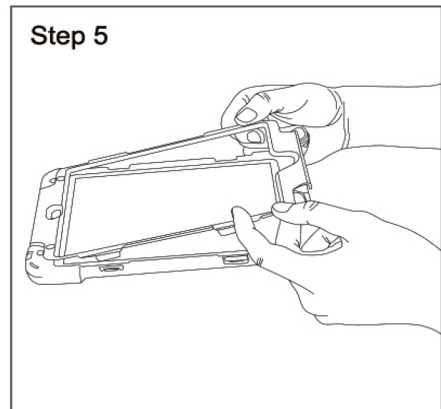
Step 3

Install the tablet into the shell, ensuring the camera and ports line up correctly.



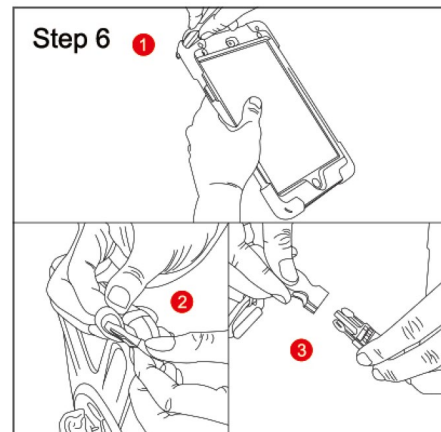
Step 4

Pull the silicon wrap back into place around the shell. Ensure it's a snug fit.



Step 5

Line up the front frame clips and lock back in place. Ensure the ports are lined up and each clip is secure.



Step 6

Separate the clasps from the main shoulder strap. Thread the clasps through the holes in any two corners using the blue installation tool and tie up as shown. Reconnect the clasps to the main strap.